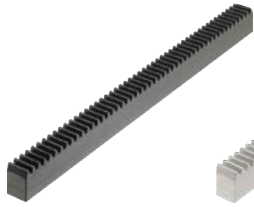
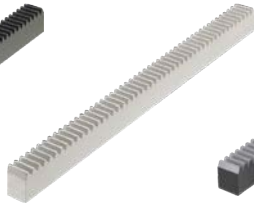


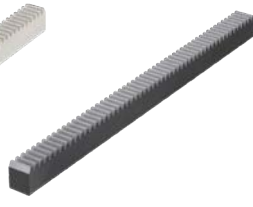
RoHS



QHCW

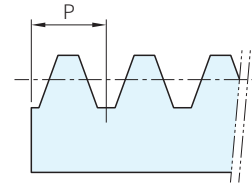


QHCWP

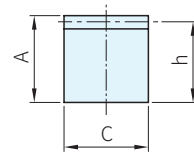
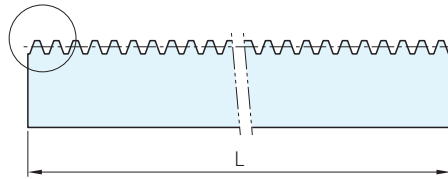


QHCWG

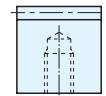
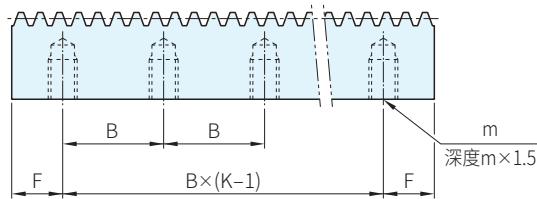
TYPE	材質	硬度	處理	壓力角
QHCW	≈S45C	-	染黑	20°
QHCWP	SUS304	-	-	
QHCWG	≈S45C	齒部淬火 45~55HRC	染黑	



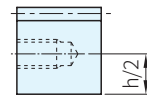
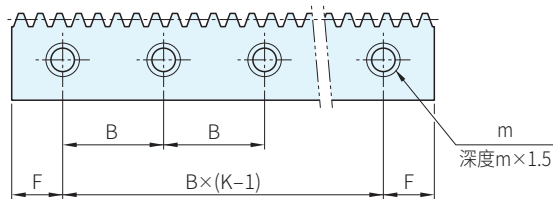
N：無孔加工



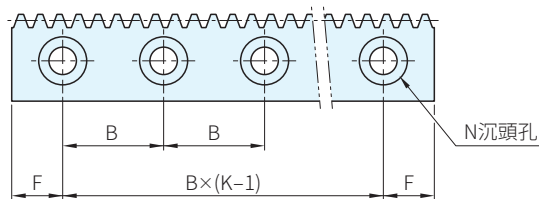
HT：背面攻牙



ST：側面攻牙



Z：側面沉頭孔



TYPE	M 模數	孔加工	L	P 節距	A mm (inch)	C mm (inch)	h mm	B 孔間距	m 粗螺紋	N 沉頭孔	K 孔數
QHCW (S45C)	1.0	N: 無孔加工	250	3.1416	15.87 (5/8")	15.87 (5/8")	14.87	180	M3	M3	2
			500								3
			1000								6
	1.5		250	4.7124	19.05 (3/4")	19.05 (3/4")	17.55		M4	M4	2
			500								3
			1000								6
	2.0		250	6.2832	22.2 (7/8")	22.2 (7/8")	20.2		M5	M5	2
			500								3
			1000								6
	2.5	HT: 背面攻牙	7.8540	25.4 (1")	25.4 (1")	22.9	2				
		ST: 側面攻牙					3				
		1000					6				
	3.0	Z: 側面沉頭孔	250	9.4248	31.75 (1-1/4")	31.75 (1-1/4")	28.75	2			
			500					3			
			1000					6			
	4.0	250	12.566	44.45 (1-3/4")	44.45 (1-3/4")	40.45	2				
		500					3				
		1000					6				
5.0	250	15.708	50.8 (2")	50.8 (2")	45.8	2					
	500					3					
	1000					6					
QHCWP (SUS304)	1.0	N: 無孔加工	250	3.1416	15.87 (5/8")	15.87 (5/8")	14.87	180	M3	M3	2
			500								3
	1.5		250	4.7124	19.05 (3/4")	19.05 (3/4")	17.55		M4	M4	2
			500								3
	2.0		500	6.2832	22.2 (7/8")	22.2 (7/8")	20.2		M5	M5	3
			1000								6
	2.5	HT: 背面攻牙	7.8540	25.4 (1")	25.4 (1")	22.9	M8	M8	3		
		ST: 側面攻牙							6		
	3.0	Z: 側面沉頭孔	500	9.4248	31.75 (1-1/4")	31.75 (1-1/4")			28.75	3	
			1000							6	
	4.0	500	12.566	44.45 (1-3/4")	44.45 (1-3/4")	40.45			3		
		1000							6		
5.0	500	15.708	50.8 (2")	50.8 (2")	45.8	3					
	1000					6					
QHCWG (S45C・淬火)	1.0	N: 無孔加工	250	3.1416	15.87 (5/8")	15.87 (5/8")	14.87	180	M3	M3	2
			500								3
	1.5		250	4.7124	19.05 (3/4")	19.05 (3/4")	17.55		M4	M4	2
			500								3
	2.0		HT: 背面攻牙	6.2832	22.2 (7/8")	22.2 (7/8")	20.2		M5	M5	2
			ST: 側面攻牙								3
	2.5	Z: 側面沉頭孔	250	7.8540	25.4 (1")	25.4 (1")	22.9	2			
			500					3			
	3.0	250	9.4248	31.75 (1-1/4")	31.75 (1-1/4")	28.75	2				
		500					3				

PS. 備註

- ・特殊長度和加工歡迎洽詢
- ・接受圖面詢價，可依圖面生產
- ・齒條如需連結，請洽詢

$$F = \frac{L-B \times (K-1)}{2}$$

訂貨： TYPE M 孔加工 - L 交期：請洽詢

QHCW 1.0 N - 250

QHCWP 3.0 HT - 500